

PERSONAL NAVIGATOR

Sunrise: 6:57 a.m. Sunset: 5:49 p.m.
 Evening Attire: Cruise Casual
 All Ashore: 8:30 a.m.
 All Aboard: 5:00 p.m.
 Sunday: Partly Sunny High: 74°F/24°C
 Monday: Partly Cloudy High: 75°F/24°C

DISNEY'S CASTAWAY CAY

SUNDAY, JANUARY 26, 2014

Disney DREAMS

AN ENCHANTED CLASSIC

In this spectacular fantasy, a little girl discovers the power of her dreams. Fly through the air with Peter Pan and your imagination as many Classic Disney Characters spring to life. With a little Faith, Trust and Pixie Dust you'll see that your dreams can come true!

WALT DISNEY THEATRE


Deck 4, Forward

6:15 p.m. & 8:30 p.m.



As a courtesy to all Guests, we kindly advise that the saving of seats is **not** permitted in the Walt Disney Theatre.



 Assistance available at the entrance to the Walt Disney Theatre 30 minutes prior to show time.

Disney's Castaway Cay

Reserved exclusively for Guests on Disney Cruise Line Bahamian and Caribbean cruise vacations, Castaway Cay is Disney's private port-of-call paradise. On this island, enjoy tropical leisure activities, such as snorkeling, boating, swimming and sunbathing.

Friendly Reminders

Serenity Bay is reserved for Guests 18 and older.

Your Key To The World Card will need to be used for all transactions on Disney's Castaway Cay except for the Post Office.

A limited number of all-terrain wheelchairs are available across from Scuttle's Cove.

For your convenience, beach towels are available as you leave the ship; please return them at the gangway at the end of your day.

Due to our commitment to the environment, we ask that seashells, coral and other natural treasures be left undisturbed at Disney's Castaway Cay for all to enjoy.



FAREWELL SHOW

The world-famous Disney Characters and some of your new friends from the Disney Magic stage shows bid you a charming farewell.

Lobby Atrium,
Deck 3, Midship,
10:00 p.m.

Don't Miss:

RunDisney: Castaway Cay 5K (12+)

D Lounge, Deck 4, Midship - 8:15 a.m.
 Runners (12+) meet at 8:15 a.m. We will depart the ship at 8:30 a.m., and make our way to the Bike Rentals where the run will begin.

Crab Races

Island Gazebo 1, Disney's Castaway Cay - 11:45 a.m.
 Island Gazebo 2, Disney's Castaway Cay - 12:45 p.m.
 Watch some local sea creatures make a break for the finish line.

Animation - Donald Duck

Promenade Lounge, Deck 3, Aft - 4:00 p.m.
 Your Cruise Staff teach you how to draw one of your favorite Disney friends - Donald Duck.

80's Flashback (18+)

Fathoms, Deck 3, Forward - 11:00 p.m.
 The 80's are back! Join your Cruise Staff team, in testing your 80's knowledge in this high energy 80's revival.

Debark Talk Broadcast

Important information regarding disembarkation procedures for Port Canaveral and your journey home will be covered in this debarkation briefing. The broadcast will be shown continuously on channel 24-2 of your stateroom television for your convenience.

Thank you in advance for completing your comment card.

IMPORTANT NUMBERS

Fire/Security: 7-3001
 Medical Emergency: 7-3000
 Health Center: 7-1923

DINNER MENU

Animator's Palate: Show Dinner
 Carioca's: South American Dinner
 Lumière's: French Dinner

DRINK OF THE DAY

Stingray (Alcoholic)
 Espresso Chiller (Non Alcoholic)

FUN FOR ALL AGES HIGHLIGHTS

RUNDisney®: CASTAWAY CAY 5K (12+)

D Lounge, Deck 4, Midship - 8:15 a.m.

Runners (12+) meet at 8:15 a.m. We will depart the ship at 8:30 a.m., and make our way to the Bike Rentals where the run will begin.

ISLAND POWER WALK

Meet on the pier by the showers - 9:30 a.m.

Join us for a brisk walk around the island. Meet on the pier by the showers, the walk will depart at 9:45 a.m.

FAMILY WHALE DIG

Monstro Point, Disney's Castaway Cay - 1:00 p.m.

Our island paleontologist leads us in the excavation of a giant whale skeleton and other fossilized treasures! Make no bones about it, this is an adventure every beachcomber is sure to dig!

FAMILY MAGIC QUEST

Fathoms, Deck 3, Forward - 7:30 p.m.

Enjoy the wildest and wackiest scavenger team event on the seven seas!

WHO WANTS TO BE A MOUSEKETEER?

D Lounge, Deck 4, Midship - 7:30 p.m.

Your chance to get in to the "hot seat" and win limited edition prizes. Or, play along as part of our live studio audience.

FAREWELL KARAOKE

D Lounge, Deck 4, Midship - 10:30 p.m.

Bring along the entire family for one more round of karaoke. This is your last opportunity to grab the mic and sing along to your favorite song.

ADULT ACTIVITY HIGHLIGHTS



SENSES SPA FITNESS CLASSES & SEMINARS

Sunrise Stretch - Senses Spa Fitness Center - 7:30 a.m.

Body Sculpt Boot Camp - Senses Spa Fitness Center - 8:00 a.m.

Group Cycling - Senses Spa Fitness Center - 3:00 p.m.

Detox for Health & Weight Loss - Senses Spa Fitness Center - 4:00 p.m.

TASTING CLASSES

Cognac Tasting (21+) - Cove Cafe (Nom. Fee Applies) - 10:30 p.m.

Please make reservations for tastings at Guest Services for a nominal fee.

Tasting Seminars are only for Guests 21 and Older.

CLUB
18*21

CLUB 18*21 - BASKETBALL FREE THROW

In Da Shade, Disney's Castaway Cay - 2:00 p.m.

CLUB 18*21 - MIXER

O'Gills Pub, Deck 3, Forward - 10:00 p.m.

ART OF THE THEME SHOW TOUR

Meet at Palo, Deck 10, Aft - 4:30 p.m.

Join us on a guided ship tour and discover the key ingredients that make the Disney Magic.



POP!

Fathoms, Deck 3, Forward - 10:30 p.m.

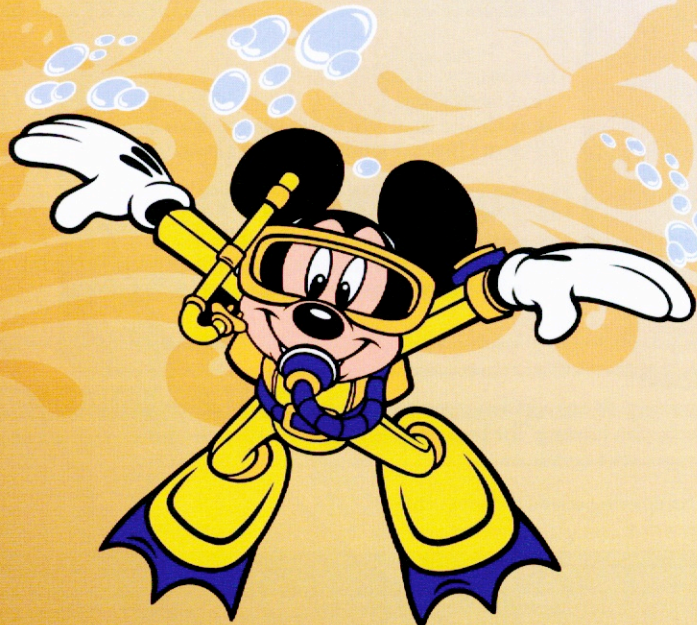
Have you been told you are full of useless information about pop culture? If the answer is "Yes", then you have what it takes to play the high energy game show all about the world of Pop!



80'S FLASHBACK

Fathoms, Deck 3, Forward - 11:00 p.m.

The 80's are back! Join your Cruise Staff team, in testing your 80's knowledge in this high energy 80's revival.



\$10,000 FINAL MEGA JACKPOT BINGO

Fathoms, Deck 3, Forward
Card Sales - 4:00 p.m.
Game Starts - 4:30 p.m.

It's Big, it's Massive, it's Supersized! It's \$10,000 MEGA Jackpot Bingo! Take home \$10,000 if you can cover your card in 46 numbers or less. If not, we carry on to play for the biggest cash prize of the session! Plus, the Snowball Jackpot must be won at this final game of bingo!

YOUTH ACTIVITIES HIGHLIGHTS

DINE & PLAY

A convenience for families dining at 8:15 p.m., our Youth Activities Counselors will be available at 9:15 p.m. at the entrance of Lumière's, Carioca's and Animator's Palate dining rooms to bring registered children to join the fun in Disney's Oceaneer Club and Disney's Oceaneer Lab.



Deck 5, Aft (7-5864) 8:30 a.m. - 11:00 p.m.

Infants and Toddlers can enjoy toys and activities at It's a Small World Nursery. Reservations are first come, first served so please stop by!



Deck 5, Midship (7-1440) 3:00 p.m. - 12:00 mid
(3-12 years old)

THE ROYAL BALL

3:15 p.m.

Attend your own Royal Ball and learn to be a prince or a princess.

ONCE UPON A TIME

4:15 p.m.

Join Beverly the Bookmaker for a magical, musical story time featuring a Disney Princess!



Deck 5, Midship (7-1445) 9:00 a.m. - 12:00 mid
(3-12 years old)

OCEANEER RANGERS

3:15 p.m.

Put your teamwork to the test in this challenge.

PISTON CUP CHALLENGE

4:30 p.m.

It's Dinoco time and you're part of the pit crew! Design your own race car and see if you've got what it takes to end up in the Winner's Circle!



Deck 2, Midship (7-5816) 4:00 p.m. - 12:00 mid
(11-14 years old)

PELICAN PLUNGE

11:30 a.m.

Come and enjoy some sliding fun with your Edge team.

HOW WELL DO YOU KNOW YOUR COUNSELOR?

10:00 p.m.

Do you think you know all there is to know about your counselors? Come test out your knowledge with all of your friends!



Deck 11, Midship (7-18517) 4:00 p.m. - 1:00 a.m.
(14-17 years old)

SCAVENGER HUNT

5:30 p.m.

A little friendly competition exploring the ship; see if you can solve the clues and finish first

PUMP IT UP

9:00 p.m.

Join us in the Fitness Center for a Teen Only workout. Meet in Vibe to join in!

BUENA VISTA THEATRE

Today's Movies

DOLBY 3D

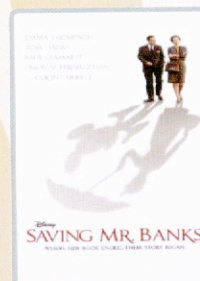


8:30 a.m. & 1:00 p.m.
Duration: 1 hr 48 mins
Rating: PG

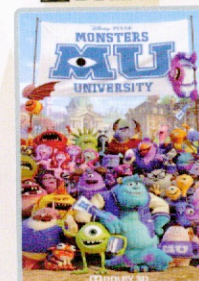


10:45 a.m.
Duration: 1 hr 51 mins
Rating: PG-13

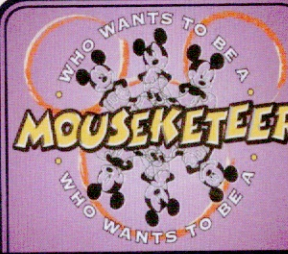
DOLBY 3D



3:15 p.m. & 10:30 p.m.
Duration: 2 hrs 5 mins
Rating: PG-13




5:45 p.m. & 8:15 p.m.
Duration: 1 hr 43 mins
Rating: G



Your chance to get into the world famous hot seat and win an exclusive prize in our version of the well known television game show.

**D Lounge,
Deck 4, Midship,
7:30 p.m.**



THEME NIGHT

THE 80'S ARE BACK!
Join your Cruise Staff team, in testing your 80's knowledge in this high energy 80's revival.

**Fathoms (18+),
Deck 3, Forward,
11:00 p.m.**

YOUTH ACTIVITIES OPEN HOUSE

Open House is an opportunity for all to come and participate in a variety of exciting activities and free time in the Oceaneer Club, Oceaneer Lab, Edge, Vibe, and It's a Small World Nursery throughout the cruise. During these times secured programming will still be offered in the other venues for those looking to check their children into care.

Vibe: 4:00 p.m. - 5:30 p.m.
Edge: 6:00 p.m. - 7:30 p.m.

Disney's Oceaneer Lab: 9:00 a.m. - 3:00 p.m.
Disney's Oceaneer Club: 3:00 p.m. - 6:00 p.m.

MORE TO ENJOY WHILE ONBOARD



DISNEY VACATION CLUB

Visit the Disney Vacation Club information desk and ask us about show times where you will learn how to turn every vacation into the vacation of a lifetime.

PLAN YOUR NEXT GETAWAY NOW

Our 3 and 4 night Bahamian Cruises are a perfect way to get an instant tropical recharge! Departing from Miami or Port Canaveral, most Bahamian cruises include a stop at Disney's private island, Castaway Cay. Visit the Future Cruise Sales Desk today and ask about our special onboard booking offer.

EXPRESS WALK OFF

This option allows you to take your luggage off the ship at your leisure once the ship has been cleared by the local authorities. You won't need to wait for your luggage to enter the terminal and there is no need to claim it inside the terminal building. Please note that no assistance with luggage is provided for this option.

EXPRESS CHECK OUT

If you have a credit card on file, you qualify for express check out. No need to visit Guest Services to settle your account.



Welcome to Disney's Island Paradise Castaway Cay.

Today is the day to relax in an inner tube, snorkel in the Caribbean blue, get up-close and personal to real life stingrays or fly high in the sky on a parasail excursion during a breathtaking aerial adventure. Visit Marge's Barges or one of the rental locations and our friendly team will assist in making any last minute bookings.

PORT ADVENTURES MEETING TIMES AND LOCATIONS

as per ticket	Castaway Ray's Stingray Adventure	Gil's Fins and Boats
as per ticket	Parasailing	Marge's Barges
as per ticket	Glass Bottom Boat	Marge's Barges
as per ticket	The Wild Side Teen Adventure	Vibe (on ship)
as per ticket	Seahorse Catamaran Snorkel Adventures	Marge's Barges
as per ticket	Nature Walk and Kayaking	Marge's Barges
as per ticket	Castaway Cay Bottom Fishing	Marge's Barges
as per ticket	Abaco Backcountry Fishing Adventure	Marge's Barges

CASTAWAY CAY ISLAND RENTALS

Rentals will be open until 3:30 p.m.

Bicycles	Upon Arrival	Bicycle Rental
Boats	Upon Arrival	Boat Beach
Float	Upon Arrival	Gil's Fins and Boats/Flippers and Floats
Getaway Package	Upon Arrival	Gil's Fins and Boats/Flippers and Floats
Snorkeling Gear	Upon Arrival	Gil's Fins and Boats/Flippers and Floats

Based on availability, reservations can be made on the island at each rental location. Waivers: Please have your waivers signed before arriving to the departure location.



Deck 9, Forward - Phone : 7-1465

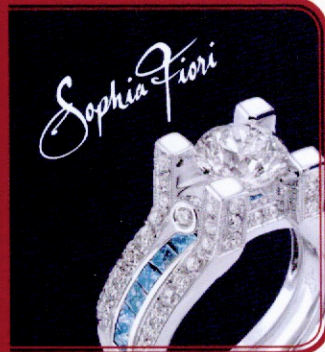
SALON TASTER SPECIAL

Choose from any of the following:

Scalp Massage ~ European Facial ~ Hand Treatment
Sunglow Makeover ~ Conditioning Hair Treatment ~ Eye Collagen Facial
Foot and Ankle Massage ~ Neck and Shoulder Massage
Choose Three for \$99, Five for \$119 and all Eight for \$139

SOPHIA FIORI

Industry leaders in vivid colored diamonds, and more specifically Caribbean blue diamonds - one of the single most popular purchases at sea because it reminds everyone of the colors of the Breathtaking Ocean!



WHITECAPS

Deck 4, Forward



GET THE PICTURE!

Your professional cruise photos all inclusive packages*
Unlimited digital files or unlimited prints - \$229.95
Unlimited digital files plus unlimited prints - \$279.95

*offer available per stateroom; terms and conditions apply.

SHOPPING

OFFICER PIN TRADING

Pick up some Disney Cruise Line® pins when you stop by Mickey's Mainsail, Deck 4, Forward. Later, join the Officers of the Disney Magic for pin trading fun at 7:15 p.m. in Preludes, Deck 4, Forward.

HELPFUL SHOPPING TIP FOR CASTAWAY CAY

Avoid getting sand and water on your souvenirs by placing your newly purchased items from Castaway Cay on hold at She Sells Seashells and Everything Else and at Buy the Seashore. Your items will then be delivered to Treasure Ketch on Deck 4 for pick up.

SOPHIA FIORI LAST OPPORTUNITY

Drop in to Whitecaps for your last chance to get your hands on our fantastic collection of Sophia Fiori Couture diamond jewelry! Don't miss out on these exquisite diamonds. Deck 4, Forward.

PRECIOUS DISNEY PLUSHES

Cuddle up with some of your favorite Disney pals when you swing by Mickey's Mates and pick up one of your own soft Plush. From Stitch and Agent Perry to Minnie and Mickey, you'll be sure to find a new cuddly friend to take home. Deck 4, Midship.

Due to port regulations, when the ship is docked, the stores will remain closed.

IMPORTANT INFORMATION

Security Notice

All Guests (including Children) who wish to disembark or embark the ship are required to present their Key to the World card at the gangway. A photo ID is also required for those Guests who are 18 years of age or older. Guests under the age of 18 are required to have a parent, guardian or other responsible adult sign an authorization form at the Guest Service Desk if they wish to go ashore unaccompanied or with any adult from another stateroom.

Sunscreen/Insect Repellent Advisory
Please remember to use plenty of sunscreen and mosquito repellent when venturing ashore.

Cold and Flu Reminder

Please wash hands frequently and thoroughly, particularly before meals. Contact the Health Center by dialing 7-1923, should anyone in your party become ill.

Inclement Weather

For the safety of all Guests, outdoor events may be changed due to unforeseen weather conditions.

Corridor Quiet Hours

As a courtesy to all our Guests, please recognize quiet hallway hours from 10:00 p.m. til 8:00 a.m.

Environmental Message

With Disney's commitment to the Environment please refrain from throwing anything over the Ship's side. Thank you.

No Reserved Seats Policy

As a courtesy to all Guests we kindly advise that the saving of seats is not permitted in the Walt Disney Theatre, and the saving of the sun loungers is not permitted on Deck 9 and 10. Items left unattended will be returned to lost and found at Guest Services, Deck 3, Midship.

Smoking

For the comfort of our guests, the following areas are designated as smoking areas:
• Deck 10 forward, Starboard side
• Deck 9, forward, Starboard side at Quiet Cove
• Deck 4, aft, port side from 6:00 p.m. to 6:00 a.m. only (all of Deck 4 is non-smoking from 6:00 a.m. to 6:00 p.m.)
Smoking is prohibited inside all guest staterooms and on stateroom verandahs. Guests found smoking in their staterooms or on their verandahs will be charged a \$250 stateroom recovery fee

Sunscreen Advisory

Don't forget to apply sunscreen and insect repellent when going ashore.

Walt Disney Theatre

Theatrical performances may use artificial fog, strobe lights, pyrotechnics and other special effects. For the safety of our performers and the comfort of those around you, the use of any photography or video recording device or any electronic equipment is prohibited.

Verandah Safety

Please do not leave any combustible materials on your balcony when not present in your stateroom for safety reasons.

Morning	8:30	8:45	9:00	9:15	9:30	9:45	10:00	10:15	10:30	10:45	11:00	11:15	11:30	11:45	12:00	12:15	12:30	12:45	1:00	1:15	1:30	
FUNNEL VISION	Lilo & Stitch (PG) Funnel Vision						Cars 2 (G) Funnel Vision						Pixar Short Films (G) Funnel Vision						Up (PG) Funnel Vision			
BUENA VISTA THEATRE	Frozen (PG) Duration: 1 Hour 48 Minutes						Thor: The Dark World (PG-13) Duration: 1 Hour 51 Minutes						Frozen (PG) Duration: 1 Hour 48 Minutes									
CHARACTER	Donald Post Office		Minnie Scuttles Cove		Mickey Scuttles Cove		Donald Post Office		Minnie Rustmore		Chip & Dale Post Office		Mickey Rustmore									
	Pluto Rustmore		Chip & Dale Post Office		Goofy Rustmore		Jack Sparrow Marge's Barges		Pluto Scuttles Cove		Goofy Scuttles Cove		Jack Sparrow Marge's Barges									
FUN FOR ALL AGES	Meet in D Lounge at 8:15 a.m. (12+)		Island Power Walk Meet on the pier by the showers						Crab Races Island Gazebo 1						Crab Races Island Gazebo 2		Dreem Live Island Gazebo 1		Family Whale Dig Monstro Point			
ADULTS	Interdenominational Service Fathoms (Guest Led)		Friends of Bill W. Keys						Yoga on the Beach Senses Spa Fitness Center													
	Books and Magazines available in Cove Cafe																					
VIBE 14-17 YEARS OLD							Meet At Teen Hideout												Lunch at Cookies Too			
EDGE 11-14 YEARS OLD							Meet At Marge's Barges		Meet At In Da Shade		Pelican Plunge						Lunch at Cookies Too		Meet At In Da Shade			
SCUTTLE'S COVE	Water Games				Whale Dig				Whale Dig				Lunch at Pop's Props				Caribbean Beach Party					
OCEANEER LAB 3-12 YEARS OLD	Youth Activities Open House																					

Afternoon	1:45	2:00	2:15	2:30	2:45	3:00	3:15	3:30	3:45	4:00	4:15	4:30	4:45	5:00	5:15	5:30	5:45	6:00	6:15	6:30	6:45	
FUNNEL VISION							Wreck It Ralph (PG) Funnel Vision															
BUENA VISTA THEATRE							Saving Mr. Banks (PG-13) Duration: 2 Hours 5 Minutes						Monsters University (G) Duration: 1 Hour 43 Minutes									
CHARACTER	Chip & Dale Gangway				Chip & Dale Gangway		Daisy Dk 4, Mid		Belle Preludes		Minnie Dk 4, Mid											
			Stitch Gangway				Stitch Gangway		Donald Dk 4, Mid		Mickey Dk 4, Mid											
FUN FOR ALL AGES	Board Games Available Promenade Lounge						Bingo Pre Sales		\$10,000 Final Mega Jackpot Fathoms		Live Music with Infusion Duo Promenade Lounge		Live Music with Dreem Lobby Atrium		Walt Disney Theatre							
							Animation - Donald Promenade Lounge		Toddler Time Promenade Lounge													
ADULTS	Club 18*21 - Basketball Free Throw In Da Shade				Group Cycling Senses Spa Fitness Center		Detox for Health & Weight Loss Senses Spa Fitness Center		Disney Vacation Club Group Preview D Lounge		Art of The Theme Show Tour Meet at Palo		Singles' Mingle Cove Cafe				Joe Creamer Live Keys					
VIBE 14-17 YEARS OLD	Meet At Teen Hideout						Youth Activities Open House						Scavenger Hunt									
EDGE 11-14 YEARS OLD	Meet At Teen Hideout												Scavenger Hunt						Youth Activities Open House			
SCUTTLE'S COVE	Capture the Flag				Scuttle's Cove Closes at 3:00 p.m.																	
OCEANEER LAB 3-12 YEARS OLD	Youth Activities Open House				Oceaneer Rangers				Piston Cup Challenge								Dinner					
OCEANEER CLUB 3-12 YEARS OLD					Youth Activities Open House						The Royal Ball		Once Upon a Time		Become Iron Man!						Dinner	

Evening	7:00	7:15	7:30	7:45	8:00	8:15	8:30	8:45	9:00	9:15	9:30	9:45	10:00	10:15	10:30	10:45	11:00	11:15	11:30	11:45	12:00	
FUNNEL VISION	NFL Pro Bowl: AFC vs. NFC Funnel Vision (Subject to satellite availability)												Bedtime Stories (PG) Funnel Vision									
BUENA VISTA THEATRE							Monsters University (G) Duration: 1 Hour 43 Minutes						Saving Mr. Banks (PG-13) Duration: 2 Hours 5 Minutes									
CHARACTER	Tiana Dk 4, Mid				Mickey Dk 4, Mid																	
FUN FOR ALL AGES	Pin Trading Preludes		D Lounge		Walt Disney Theatre				Lobby Atrium		D Lounge											
			Family Magic Quest Fathoms						Live Music with Infusion Duo Promenade Lounge		Live Music with Infusion Duo Promenade Lounge											
ADULTS	NFL Pro Bowl: AFC vs. NFC O'Gills Pub (Subject to satellite availability)												Club 18*21 - Mixer O'Gills Pub		Fathoms		Fathoms		Cruise Staff DJ Fathoms		Live Piano with Clara Oman Keys	
			Live Piano with Clara Oman Keys		Joe Creamer Live Keys				Tribute to Frank Sinatra Keys													
VIBE 14-17 YEARS OLD	Dodgeball												Pump It Up		Smoothie Hour		Final Farewell		Mix and Match			
EDGE 11-14 YEARS OLD	Open House		Dodgeball		Tween Choice				Talent Show				How Well Do You Know Your Counselor?		Final Farewell Slideshow							
OCEANEER LAB 3-12 YEARS OLD			Anyone Can Cook				Game Challenge				Super Sloppy Science											
OCEANEER CLUB 3-12 YEARS OLD	Marvel Avengers Academy								Dance Party													

Symbol for activities that will be repeated during the cruise
 FOLD
 Fold along the dotted lines and take me with you so you don't miss any of the fun!
 FOLD
 IN THE SPOTLIGHT SERIES
 SOLVE IT! SERIES
 JUMP! SERIES
 CREATE & INVENT SERIES
 OPEN HOUSE
 CLUBHOUSE SERIES
 STORYBOOK SERIES

SUNDAY, JANUARY 26, 2014 - DISNEY'S CASTAWAY CAY

BUENA VISTA THEATRE

DOLBY 3D



8:30 a.m. & 1:00 p.m.
Duration: 1 hr 48 mins
Rating: PG



10:45 a.m.
Duration: 1 hr 51 mins
Rating: PG-13



3:15 p.m. & 10:30 p.m.
Duration: 2 hrs 5 mins
Rating: PG-13

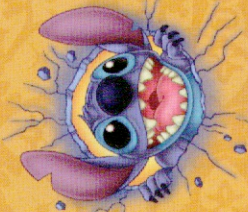
DOLBY 3D



5:45 p.m. & 8:15 p.m.
Duration: 1 hr 43 mins
Rating: G

Character Appearances

- DONALD DUCK**
Post Office
8:45 a.m. & 9:45 a.m.
Deck 4, Midship - 4:45 p.m.
- PLUTO**
Mt. Rustmore - 9:00 a.m.
Scuttle's Cove - 10:00 a.m.
- MINNIE MOUSE**
Scuttle's Cove - 9:00 a.m.
Mt. Rustmore - 10:00 a.m.
Deck 4, Midship
5:15 p.m. & 8:15 p.m.
- CHIP & DALE**
Post Office
9:15 a.m. & 10:15 a.m.
Gangway
2:00 p.m. & 3:00 p.m.
- GOOFY**
Mt. Rustmore - 9:30 a.m.
Scuttle's Cove - 10:30 a.m.
- MICKEY MOUSE**
Scuttle's Cove - 9:30 a.m.
Mt. Rustmore - 10:30 a.m.
Deck 4, Midship
5:45 p.m. & 7:45 p.m.
- CAPTAIN JACK SPARROW**
Marge's Barges
9:45 a.m. & 11:00 a.m.
- STITCH**
Gangway
2:30 p.m. & 3:30 p.m.
- DAISY DUCK**
Deck 4, Midship - 4:15 p.m.
- BELLE**
Preludes - 4:45 p.m.
- PRINCESS TIANA**
Deck 4, Midship - 7:15 p.m.
- TIL WE MEET AGAIN**
Lobby Atrium - 10:00 p.m.



Don't forget your Camera to capture those Magical Moments!
Check here each day for Character appearances.
For detailed Character appearance information, please see the Character Information Board in the Lobby Atrium.
Meet-and-Greets will be advertised for the length of time the line will be open. To avoid disappointment, please meet at start time of appearances.

YOUTH ACTIVITIES THEMED EXPERIENCES

- CLUBHOUSE SERIES** focuses on movement and features content which appeals to younger children.
- STORYBOOK SERIES** is designed with a strong connection to the Disney classic stories.
- JUMP UP! SERIES** includes large ground games & movement-oriented activities, activities and enthusiasm.
- CREATE & INVENT SERIES** will have a tactile focus allowing children to create and admire their work.
- SOLVE IT! SERIES** are less active, but will challenge children with problem/solutions-based activities.

YOUTH ACTIVITIES OPEN HOUSE

Activities for families, adults and children of all ages to enjoy together.

SHIP DIRECTORY

YOUTH ACTIVITIES

DISNEY'S OCEANEER CLUB DECK 5, MID	3:00 PM - 12:00 MID
DISNEY'S OCEANEER LAB DECK 5, MID	9:00 AM - 12:00 MID
EDGE DECK 2, MID	4:00 PM - 12:00 MID
IT'S A SMALL WORLD NURSERY DECK 5, AFT	8:30 AM - 11:00 PM
VIBE DECK 11, MID	4:00 PM - 1:00 AM

POOLS

*Children under 12 years of age must have adult supervision in all pools.

AQUADUNK DECK 10, MID	11:00 AM - 9:00 PM
AQUALAB DECK 9, AFT	9:00 AM - 9:00 PM
GOOFY'S POOL DECK 9, MID	9:00 AM - 9:00 PM
NEPHEW'S SPLASH ZONE DECK 9, AFT	9:00 AM - 6:00 PM
QUIET COVE POOL DECK 9, FWD	6:00 AM - 9:00 PM
TWIST 'N' SPOUT DECK 9, AFT	10:00 AM - 9:00 PM

RECREATION

PORT ADVENTURES DESK DECK 3, FWD	6:30 AM - 10:00 PM
SENSSES FITNESS CENTER DECK 10, FWD	24 HOURS
WIDE WORLD OF SPORTS DECK DECK 10, FWD	24 HOURS

GENERAL INFORMATION

BUENA VISTA THEATRE DECK 5, AFT	SHOWTIMES
DISNEY VACATION CLUB DESK DECK 4, MID	9:00 AM - 11:00 AM
FUTURE CRUISE SALES DESK DECK 4, MID	3:30 PM - 10:00 PM
FUNNEL VISION DECK 9, MID	8:30 AM - 9:30 AM
GUEST SERVICES DECK 3, MID	4:00 PM - 6:00 PM
HAIR BRANDING DECK 9, MID	7:30 PM - 10:30 PM
MEDICAL HEALTH CENTER DECK 1, FWD	SHOWTIMES
PORT & SHOPPING DESK DECK 3, MID	24 HOURS
PRELUDES DECK 4, FWD	9:00 AM - 11:00 AM
QUARTER MASTERS (ARCADE) DECK 9, MID	4:30 PM - 7:00 PM
SENSSES SPA AND SALON DECK 9, FWD	5:30 PM - 8:30 PM
SHOOTERS PHOTO GALLERY DECK 4, AFT	24 HOURS
WALT DISNEY THEATRE DECK 4, FWD	8:00 AM - 10:00 PM
	5:30 PM - 11:00 PM

SHOPPING

MICKEY'S MAINSAIL DECK 4, FWD	5:30 PM - 11:00 PM
QUACKS DECK 9, MID	
SEA TREASURES DECK 3, FWD	7:00 PM - 11:00 PM
VISTA GALLERY DECK 4, MID	7:00 PM - 11:00 PM
WHITECAPS DECK 4, FWD	5:30 PM - 11:00 PM

IMPORTANT NUMBERS
Fire/Security: 7-3001
Medical EMERGENCY: 7-3000
Health Center: 7-1923

DINNER MENUC
Animator's Palate: Show Dinner
Carioca's South American Dinner
Lumiere's French Dinner
Dining Times: 5:45pm & 8:15pm
Sundays: Partly Sunny High: 74 F/24 C
Monday: Partly Cloudy High: 75 F/24 C

DINING & LOUNGES

BRUNCH

CABANAS DECK 9, AFT	7:30 AM - 11:30 AM
DAISY'S DE-LITES DECK 9, AFT	7:00 AM - 9:00 AM
LUMIERE'S (A-LA CARTE) DECK 3, MID	8:00 AM - 9:30 AM

LUNCH

CABANAS DECK 9, AFT	11:30 AM - 2:00 PM
COOKIES BBQ CASTAWAY CAY	11:30 AM - 2:00 PM
COOKIES TOO BBQ CASTAWAY CAY	11:30 AM - 2:00 PM
DAISY'S DE-LITES DECK 9, AFT	11:00 AM - 6:00 PM
PETE'S BOILER BITES DECK 9, AFT	11:00 AM - 6:00 PM
PINOCCHIO'S PIZZERIA DECK 9, MID	11:00 AM - 6:00 PM
SERENITY BAY BBQ CASTAWAY CAY	11:30 AM - 2:00 PM

DINNER

ANIMATOR'S PALATE DECK 4, AFT	5:45 PM & 8:15 PM
CARIOCA'S DECK 3, AFT	5:45 PM & 8:15 PM
LUMIERE'S DECK 3, MID	5:45 PM & 8:15 PM
PALO (FOR RESERVATIONS CALL 7-8643) DECK 10, AFT	6:00 PM - 8:30 PM
PETE'S BOILER BITES DECK 9, AFT	6:00 PM - 10:00 PM

LATE NIGHT (NACHOS)

O'GILLS PUB DECK 3, FWD	10:45 PM - 11:45 PM
PINOCCHIO'S PIZZERIA DECK 9, MID	9:30 PM - 12:00 MID
PROMENADE LOUNGE DECK 3, AFT	10:45 PM - 11:45 PM

ADDED FEATURES

EYE SCREAM DECK 9, AFT	11:00 AM - 11:00 PM
FROZEN TREATS DECK 9, AFT	3:00 PM - 8:00 PM
BEVERAGE STATION DECK 9, AFT	24 HOURS
ROOM SERVICE DIAL 7-4390	CLOSES AT 1:00 AM

ENTERTAINMENT - LOUNGES - BARS

Adults must be 21 and older to consume alcoholic beverages.

AFTER HOURS DECK 3, FWD	(AFTER 9:00 PM. ADULTS ONLY)
COVE CAFE (18+) DECK 9, MID	7:00 AM - 12:00 MID
CASTAWAY AIR BAR CASTAWAY CAY	10:00 AM - 3:30 PM
CONCHED OUT BAR CASTAWAY CAY	9:30 AM - 4:00 PM
FATHOMS (18+) DECK 3, FWD	7:00 PM - 2:00 AM
INTERNET CAFE DECK 3, AFT	24 HOURS
KEYS (18+) DECK 3, FWD	5:30 PM - 12:00 MID
O'GILLS PUB (18+) DECK 3, FWD	12:00 PM - 12:00 MID
PRELUDES DECK 4, FWD	5:30 PM - 8:30 PM
PROMENADE LOUNGE DECK 3, AFT	8:00 AM - 12:00 MID
PINOCCHIO'S PIZZERIA DECK 9, MID	9:30 AM - 12:00 MID
SAND BAR CASTAWAY CAY	9:30 AM - 3:30 PM
SIGNALS (18+) DECK 9, FWD	12:00 PM - 10:30 PM
D LOUNGE DECK 4, MID	SHOWTIMES

Public Health Advisory: Consuming raw or undercooked meats, poultry, seafood, shellfish, or eggs may increase your risk for foodborne illness, especially if you have certain medical conditions.

All Ashore: Approx. 8:30 a.m.
All Aboard: 5:00 p.m.

All Guest will require their Key To The World Card to debark the ship.
All Guests 18 & older will require a photo ID when debarking the ship.